

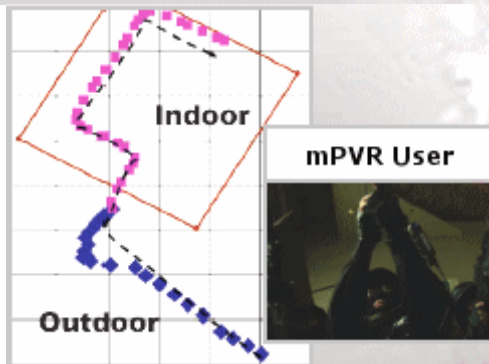
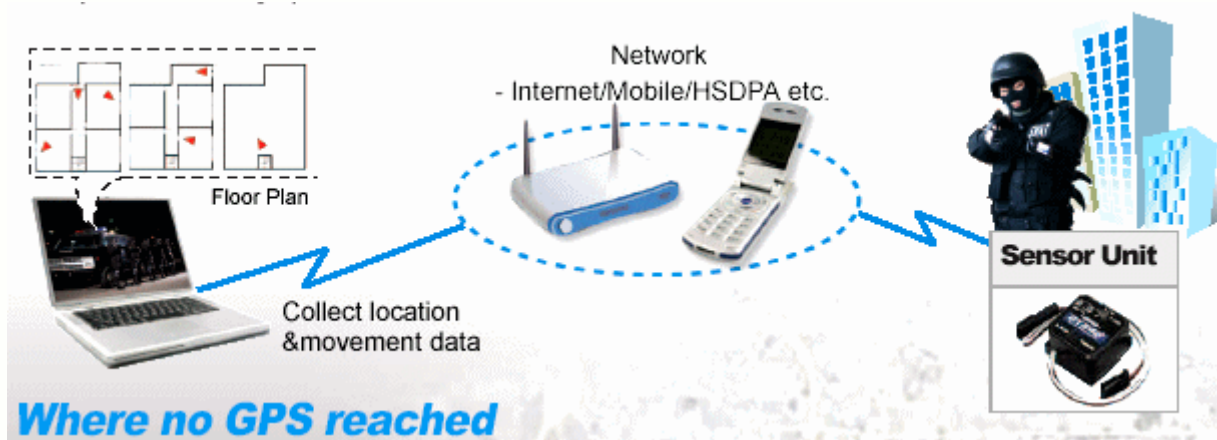
Mobile Personal Digital Video Recorder - mPVR

- H.264, SD Card, WiFi, HSDPA, GPS, LBS -

~(for Military, Police, Security, Sports, etc.)~

--< LBS Solution >-- ~ (Location Based Solution) ~

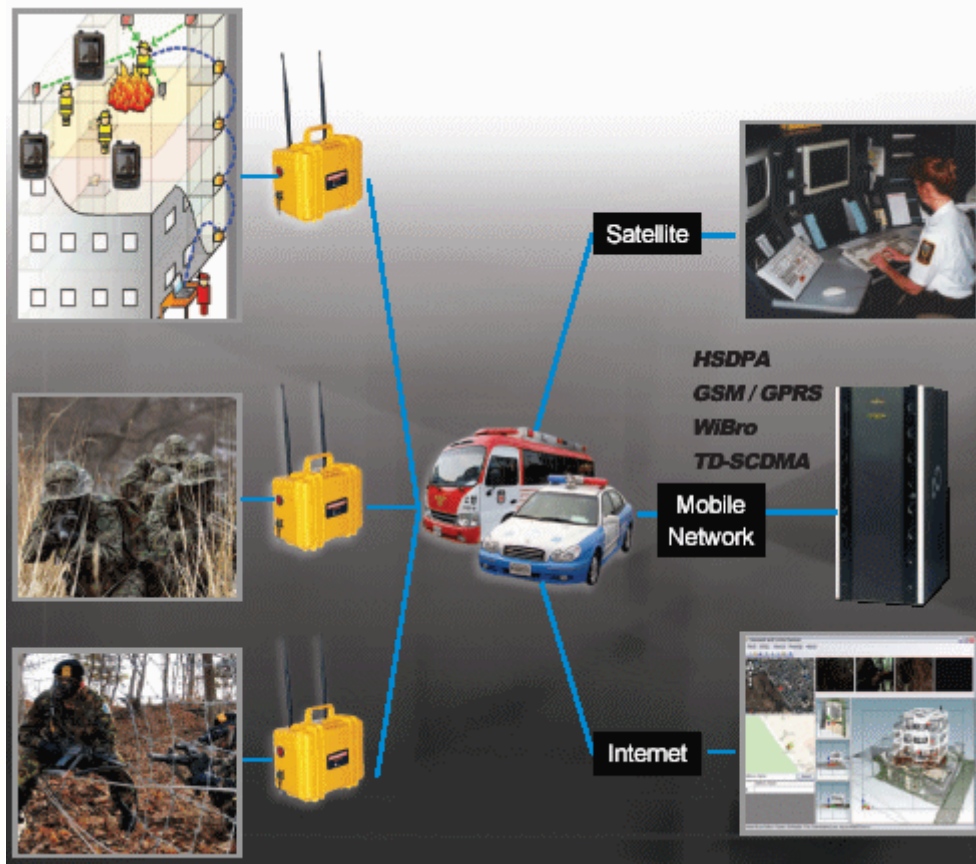
- LBS (Location Based Solution) provides variety services by collecting information of a location through mobile devices and transmits its information through Mobile & Wireless Network.
- LBS Solution has 2 mixed methods.
 1. Get each user's position by using GPS information when user is in where GPS signal reached. Use GPS information sensor unit in order to calibrate the signal.
 2. You can find where you are by using tracker with Gyro sensor and accelerometer when User is at outdoor or at indoor where no GPS signal reached.
 3. Send the position data through wireless network by analyzing 1, 2's information. The belt clipping type sensor unit delivers signal which enables to detect location & movement and this signal will be collected by most of network methods such as mobile phone & wireless network. The sensor unit, only 200g weight, gathers location & movement data and delivers data on your monitoring system.



Use GPS communication at outdoor & indoor where no GPS signal reached. It detects best signal and delivers user's location & movement data.

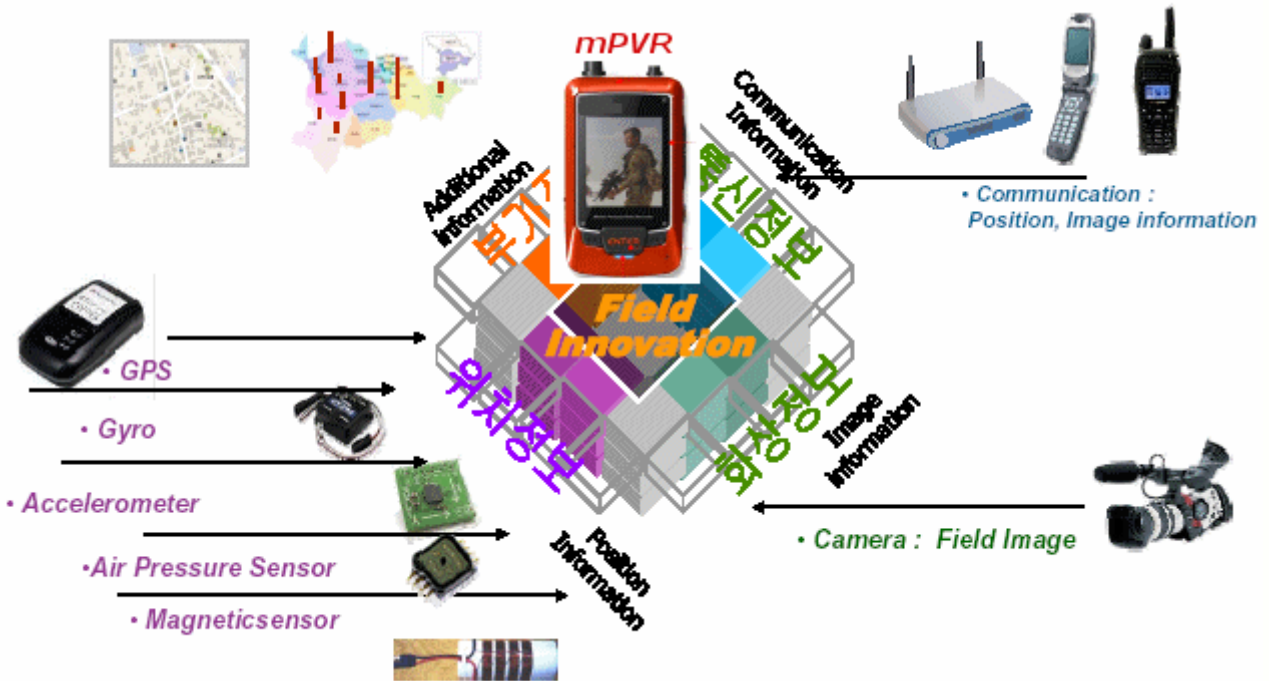
The sensor unit at the user send it's location & movement data to the Headquarter and the system can display each user's position & moving status.

~(Mesh & Mobile Network Zone)~

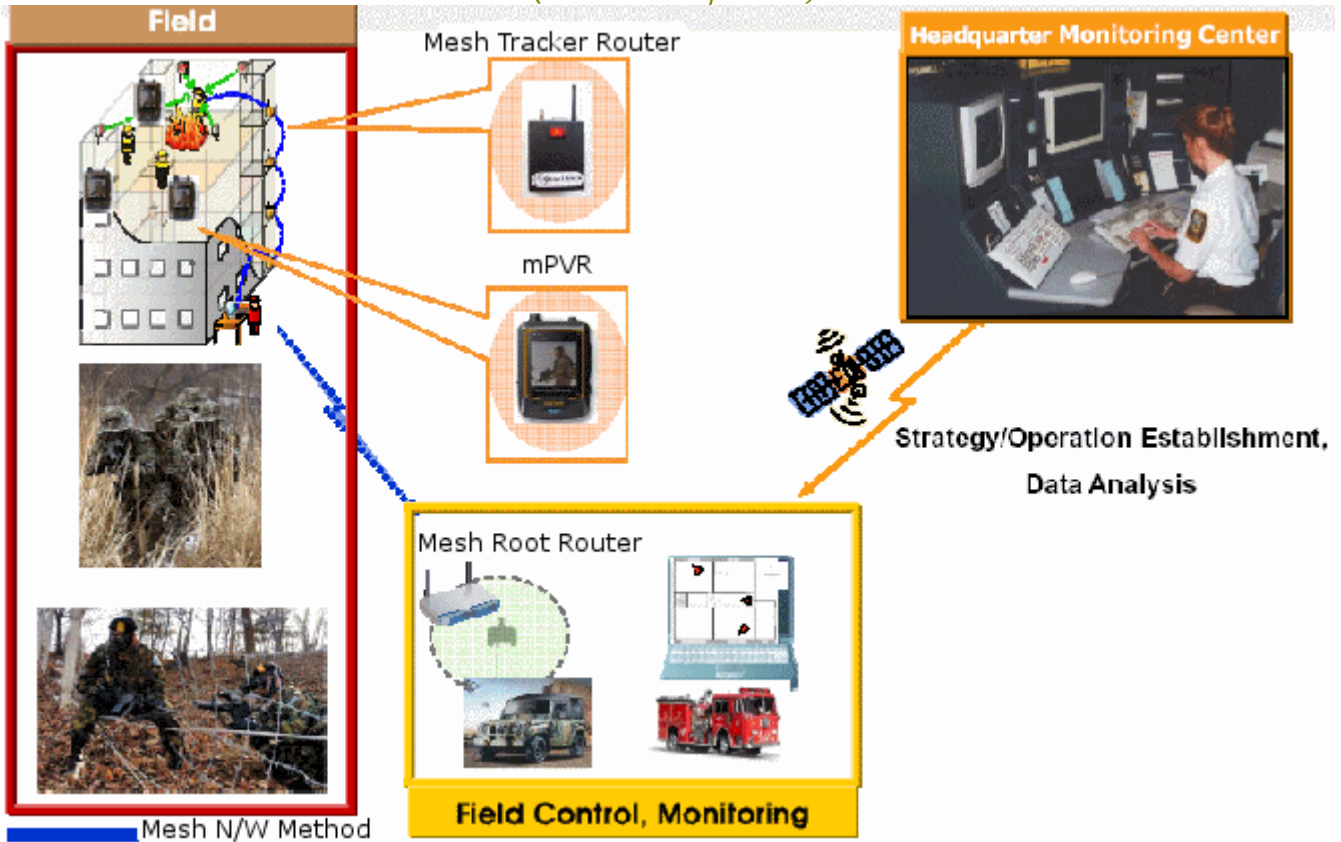


-- Mobile Network requires Mesh Bridge only --

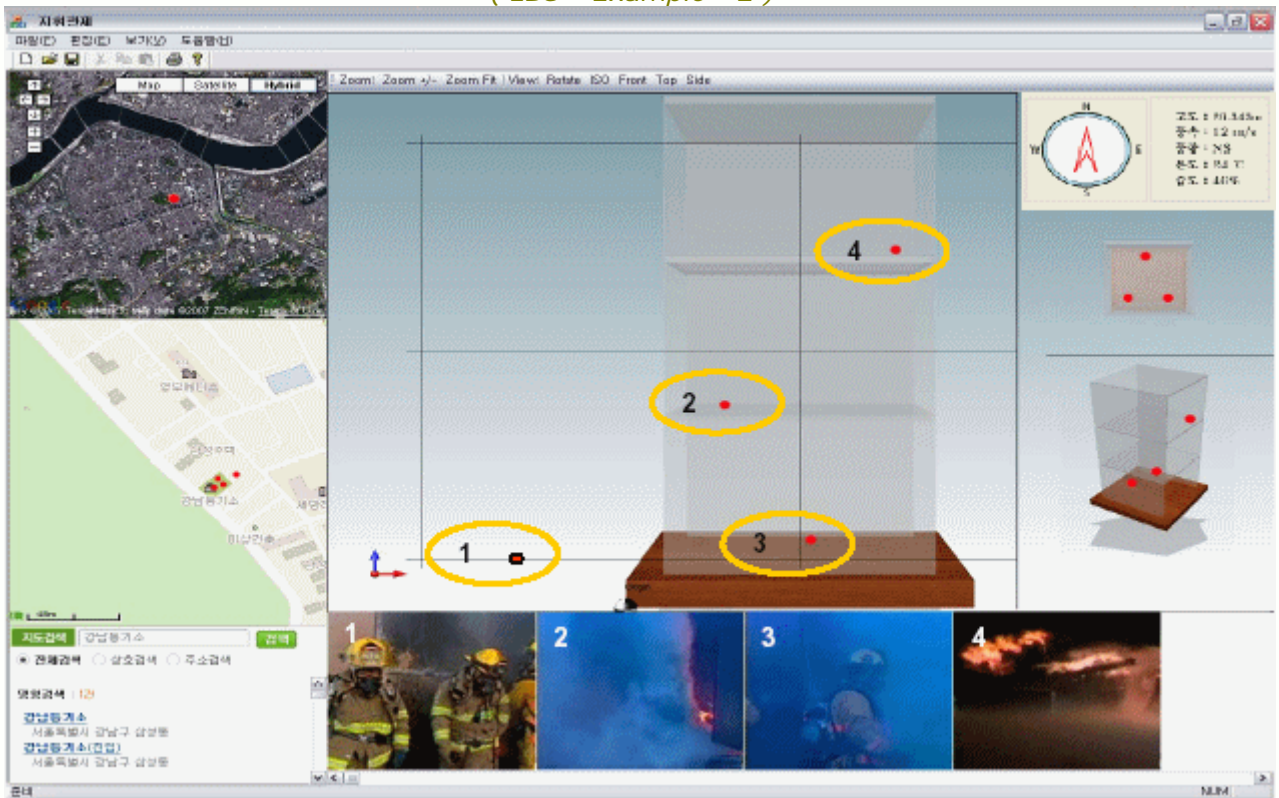
~(LBS - Next Generation)~



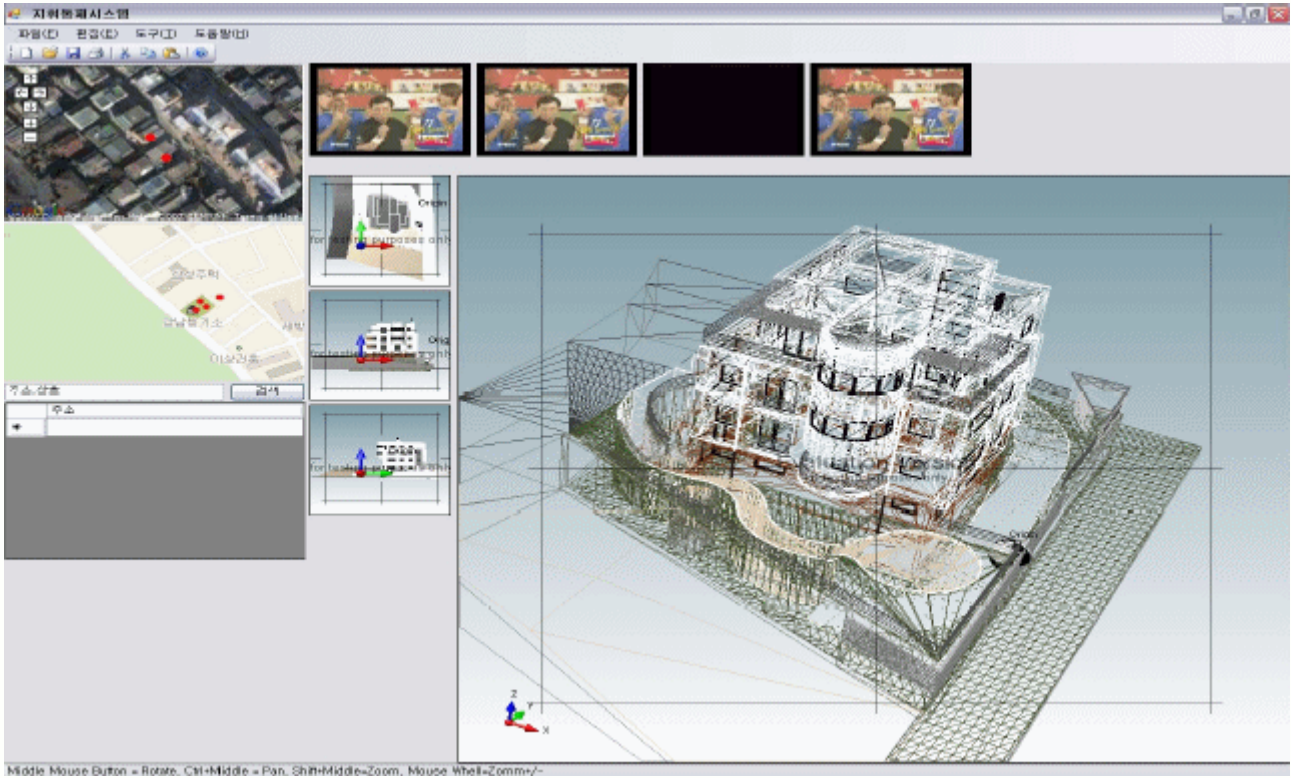
~(LBS - Example - 1)~



~(LBS - Example - 2)~



~(LBS - Example - 3)~



~(Location Based Service Devices)~



mPVR



Mesh Root Router



Mesh Tracker Router



LBS solution (SW/HW)



Main Server

Mobile Personal Video Recorder - mPVR

- H.264, SD Card, WiFi, HSDPA, GPS, LBS -

~(for Military, Police, Security, Sports, etc.)~

--< Mesh Bridge >--



- *Mesh Bridge is used for Mesh Networking.*
- *Not only quickly reconstruct another network in the event one network failed but also it keeps stable paths automatically without traffic jam.*

- ~ Redundancy ~*
- *can chooses less located point among multi paths so it can keep stable speed.*
- ~ Fast Roaming ~*
- *can provide communication service at un-reachable territory, by using Mesh Bridge (2.4GHz, 5GHz).*
- ~ Dynamic Topology ~*
- *can adjust the composition automatically*
- ~ Self Recovery ~*
- *QoS (Quality of Service) guarantee.*
- *When node is breakdown due to H/W problem in Network, it organizes the best network in current.*
- ~ Distances ~*
- *up to 300 meters.*
- ~ Max. Operating Time ~*
- *6~ 10 hrs.*